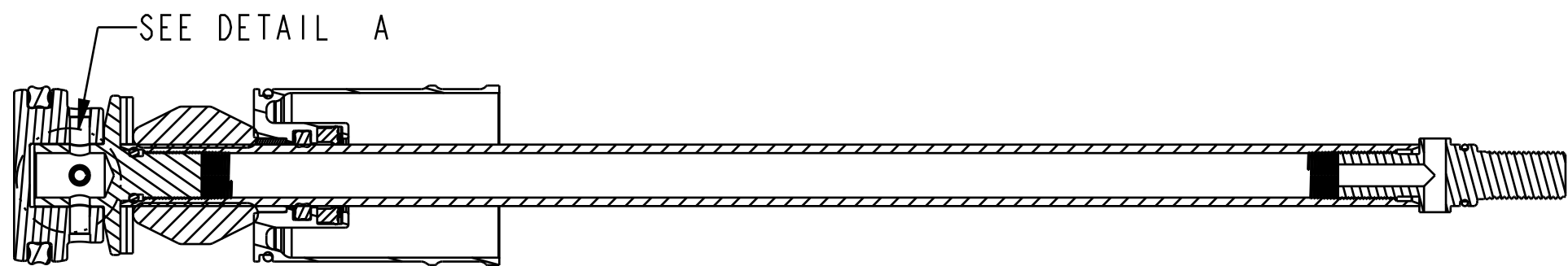


4

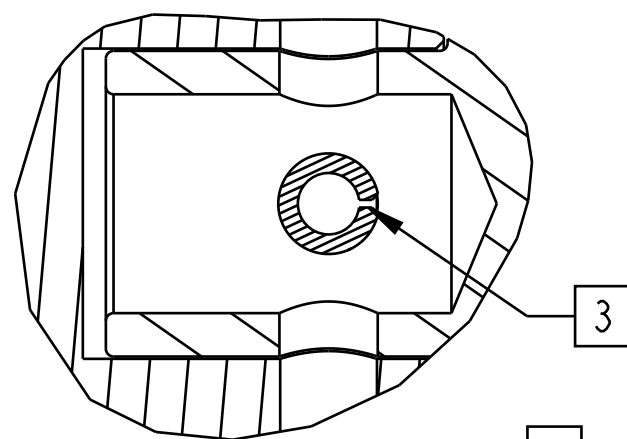
3

2

1



SECTION A-A



DETAIL A
SCALE 4:1

3 ORIENT GAP IN PIN TOWARDS BASE STUD $\pm 15^\circ$

Seals: O-Ring [8.0MM ID x 1.0MM CS] Metric, N-70, Static

Base Stud: FLOAT NA 2, External Thread, Vented

029-08-022

234-04-913

GREASE:
THIN LAYER
OF SLICK HONEY

TORQUE:
50 \pm 5 IN.LB.

NEG PLATE SUBASSEMBLY

234-04-629
Topout Bumper, FLOAT NA

LOCTITE:
1-2 DROPS
RED 262

SHAFT, INTERNALLY THREADED

TORQUE:
50 \pm 5 IN.LB.

(234-04-990)

234-04-990
Topout Spacer, FLOAT NA 2, 0.040" Thick, Aluminum

GREASE:
THIN LAYER
OF SLICK HONEY

GREASE:
THIN LAYER
OF SLICK HONEY

LOCTITE:
1-2 DROPS
RED 262

029-08-060

Seals: O-Ring [6.0mm ID x 1.5mm CS] Metric, N-70, Static

234-04-652

Base Stud: Float, 0.305-48 Thread

NOTE: PRESS IN PIN UNTIL CENTERED

3

060-01-002

Pin: Spring [Ø 0.125 X 0.750 TLG] Spring Steel, Zinc

PISTON, FLOAT NA 2

035-06-212
SEAL: O-RING

NOTE: VERIFY SEAL IS NOT TWISTED AFTER INSTALL

FOX FOX Factory, Inc. Ph 831-768-1100
130 Hangar Way, Watsonville, CA 95076 USA Fax 831-768-9312

TITLE
**Air Shaft Assy, Short Travel,
FLOAT NA 2, Topout Spacer**

SIZE DWG. NO.

C

PLOT SCALE 1:1:1

SHEET 1 OF 1

PROPRIETARY -
THIS DOCUMENT CONTAINS CONFIDENTIAL, PROPRIETARY INFORMATION
THAT IS FOX PROPERTY. DO NOT DISCLOSE TO OR DUPLICATE
FOR OTHERS EXCEPT AS AUTHORIZED BY FOX.

4

3

2

ProE ASSEM